

Ashland is an outdoor enthusiast's dream come true. Water sports abound and include **fishing, jet-boating, and rafting on the world famous Rogue River** and nearby Klamath River. Trout, steelhead, and bass fishing attracts anglers to any one of 12 nearby mountain lakes, including Emigrant Lake, just five minutes from Mountain Meadows.

For those who take their water frozen, the Mt. Ashland Ski Resort is a 20-minute drive from downtown Ashland and offers 80 miles of cross-country trails and 23 downhill runs with challenges for both novice and expert skiers. Another popular winter recreational pursuit is ice-skating at the outdoor rink in Ashland's Lithia Park.



## recreation



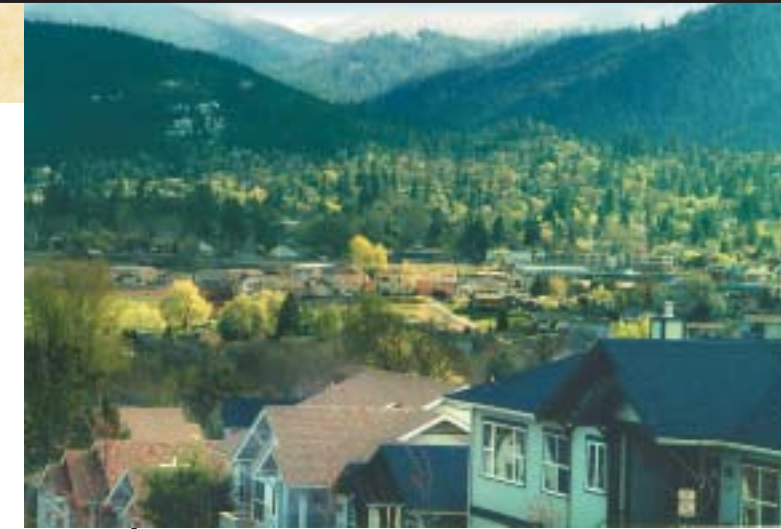
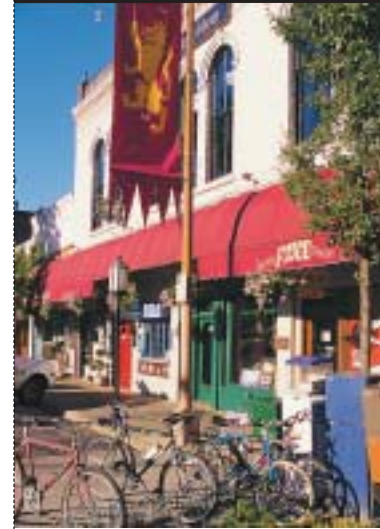
The foothills and mountains around Ashland offer hundreds of hiking and biking trails and interpretive exhibits, including the Bear Creek Greenway, which begins in Ashland and extends 18 miles north along the shores of Bear Creek. **The "crown jewel" of Ashland is the historic and acclaimed Lithia Park** with its exquisite fauna, authentic Japanese garden, duck ponds, and miles of meandering trails along Lithia Creek. Designed in part by John McLaren, long-time superintendent of San Francisco's Golden Gate Park, Lithia Park spans nearly 100 acres right off the Plaza at the center of downtown Ashland. A thriving city park system in Ashland features 16 other parks and more are in the works. Avid tennis players enjoy numerous tennis courts sprinkled throughout Ashland. The newest city park, North Mountain Park, is just 200 feet from the Mountain Meadows Clubhouse.

**The mild climate makes golf a year-round sport in Southern Oregon**, with eight courses from which to choose, including the award-winning Robert Trent Jones, Jr. course in Eagle Point (ranked by Golf Magazine as one of the 10 best public golf courses in America) and Ashland's own Oak Knoll Golf Course, just five minutes from Mountain Meadows. Visit the Ashland Racquet Club and YMCA for tennis, swimming, and many other recreational and team sports.

Whatever your recreational pleasure—from bird watching to boating, Farmers' Markets to festivals—you'll find it in beautiful Southern Oregon.



# ALL ABOUT Ashland THE HOME OF MOUNTAIN MEADOWS



Can you picture evening strolls by lovely Victorian homes along sun-dappled, tree-lined streets, or sipping cappuccino in coffee houses adjacent to art galleries and world-class theatres? Can you visualize a slower pace of life in a verdant valley nestled like a gem amidst snow-capped peaks? Can you imagine the dynamism of a community that celebrates diversity, culture, and education?

Then envision the quality of life you'll enjoy at Mountain Meadows in Ashland.

Mountain Meadows is **an active and vital community located in the charming city of Ashland, Oregon**, midway between San Francisco (372 miles to the south) and Portland (275 miles to the north). Just 14 miles north of the California border on Interstate 5, Ashland sits in a picturesque valley bordered by sloping hills and rugged mountains.

For residents of Mountain Meadows, Ashland offers the perfect combination of desirable features—from climate to convenience to culture.



1-800-337-1301

857 Mountain Meadows Drive,  
Ashland, Oregon 97520

www.mtmeadows.com  
mtnmdws@mind.net

Contact us today  
for a complimentary tour and lunch!

Ashland's elevation is 2,000 feet above sea level, with Mt. Ashland to the south at 7,500 feet, the Cascade Range to the east, and the Coastal Range to the west. Ashland residents enjoy a relatively **mild climate marked by four distinct seasons. The surrounding mountain ranges keep annual rainfall under 20 inches.** Snow is common in the mountains, but light on the valley floor. Winter lows dip into the mid-30s and summer highs average 90 degrees, with occasional days of 100-degree heat. Humidity is moderate, ranging from 52% in the summer to 83% in the winter.



Southern Oregon University's main campus is located in Ashland. A four-year university, SOU specializes in liberal arts and letters, sciences, social science and business at both the undergraduate and graduate level. SOU boasts **the largest Elderhostel program in the United States and a thriving SOLIR (Southern Oregon Learning in Retirement)** program offering opportunities to pursue intellectual interests and explore new areas of learning. SOU's flourishing Extended Campus Programs feature coursework on everything from computer science to ceramics. An acclaimed Chamber Music program brings international musicians to Ashland for its annual concert series.

## education



The Ashland Fiber Network (AFN) is the first city-owned telecommunications network in Oregon and earned Ashland a listing on Yahoo! Internet Life's list of **"Most-Wired Towns in America."** AFN provides high-speed low cost fiber-optic connections (cable television and Internet access) for local residents and businesses.



## technology

Ashland has experienced moderate population growth of approximately 1.4% per year since 1998. The current population is 19,522, with a year 2005 projection of 19,995. With a population density of just 3,000 persons per square mile, **Ashland offers an easier, more laid-back lifestyle than nearby urban centers** like San Francisco (pop. density 15,851 persons/sq mile). Just 12 miles north of Ashland on Interstate 5 is Medford (population 63,000), the county seat for Jackson County (population 181,000).

## climate



## culture

Packed with art galleries, theatres, and bookstores, Ashland offers cultural and intellectual pursuits normally found only in large urban centers. Just minutes from Mountain Meadows is the **Tony Award-winning Oregon Shakespeare Festival.** Eight months of the year, theatre lovers relish its world-class productions of Shakespeare and other classic and contemporary playwrights. Music lovers enjoy superlative performances in nearby historic Jacksonville, home of the

**Britt Festival—the Pacific Northwest's premiere summer music and performing arts festival.** The world's greatest artists in jazz, folk, country, classical, and pop perform in Britt's outdoor amphitheatre. National Public Radio is brought to Ashland via the legendary Jefferson Public Radio at Southern Oregon University. KSYS brings public television to the Rogue Valley and features a wide range of educational and cultural offerings.



## population